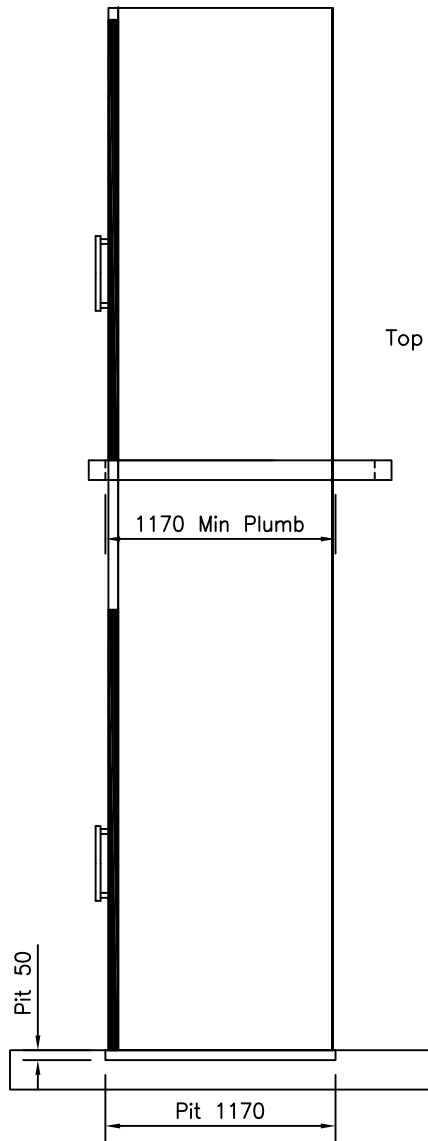
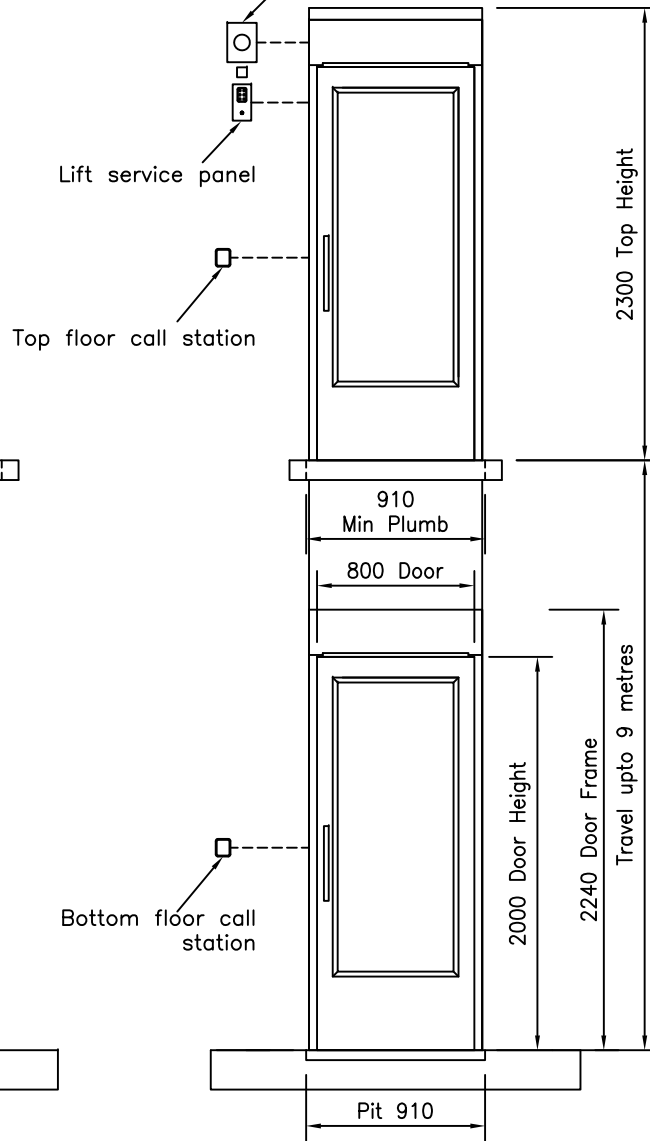


230v, 1ph, 20 amp isolator (RCD protected) & BT Telephone Socket by others.

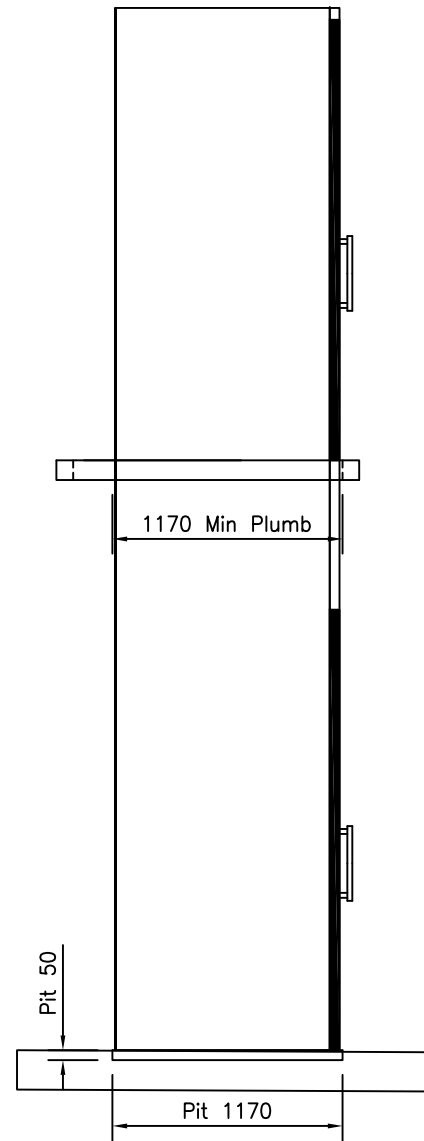
Wiring containment for mains, telephone and service panel connections by others.



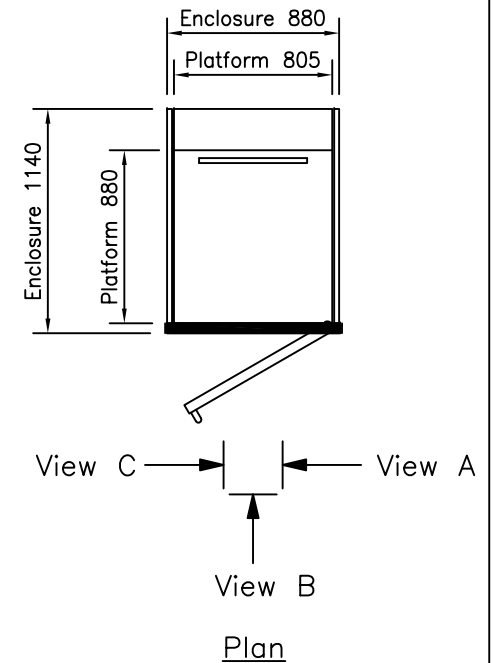
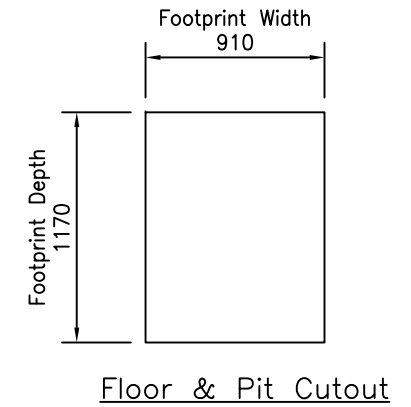
View A



View B



View C



Issued For Information Only
Do Not Use for Construction

BY	DATE	ISSUE	MODIFICATION	CHECKED

Niche Home 880 x 805 Platform Lift Layout & Builders Works

NICHE LIFTS Ltd

Do not scale this drawing. All dimensions in millimetres

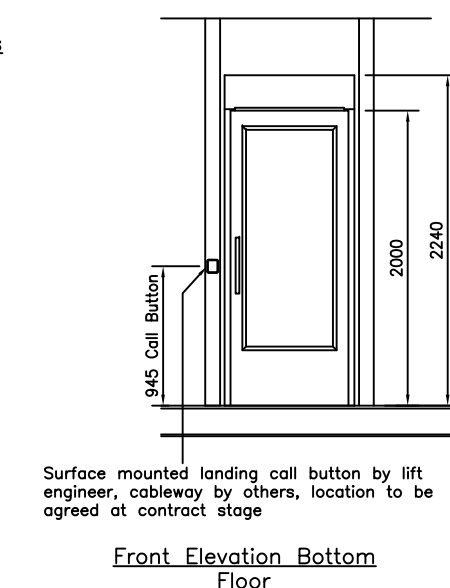
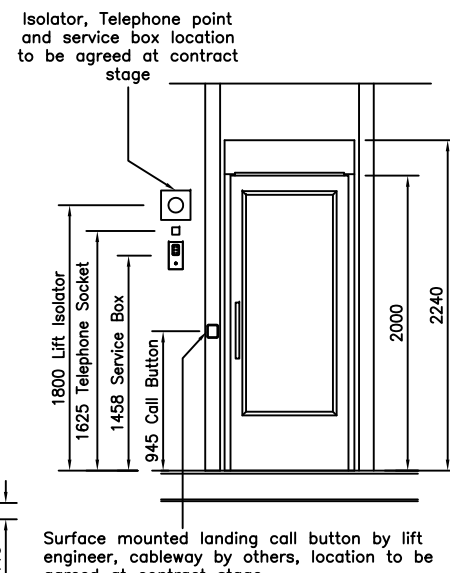
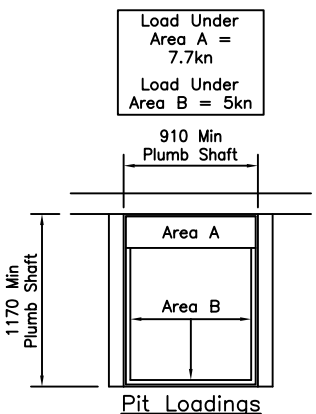
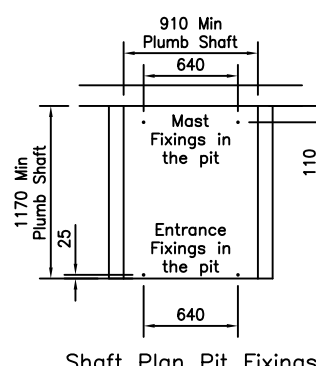
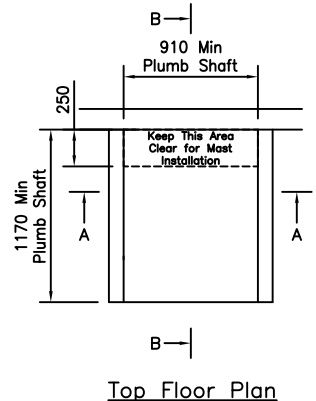
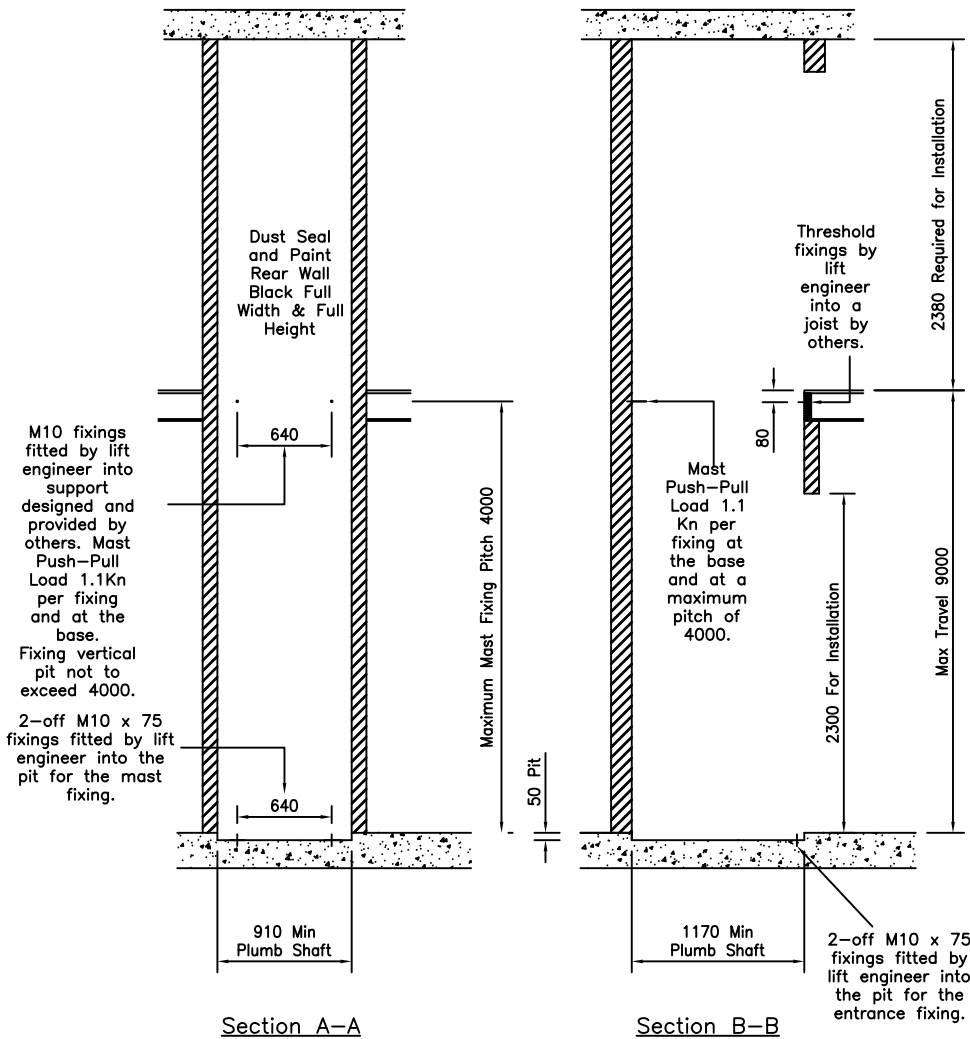
DRAWN BY	DATE	CHECKED	SCALE
TMP	28.11.18		NTS

DRAWING NUMBER

2094/A Sheet 1
of 2

SCHEDULE OF WORKS BY OTHERS

1. Provide a base the same size as the lift shaft capable of carrying the loads as indicated on our drawings. Base to be painted with oil based paint. Note the base is visible when the platform is at the upper levels.
2. Provide a 50 mm deep pit.
3. Ensure that the structure fixing points can withstand the loads as indicated on our drawings. Structural supports and design by others.
4. Provide a well as shown on our drawings with nosing's at each level for door frame fixing.
5. Provide a 230v, single phase, 20 amp RCD protected supply terminated in a fused isolator at the top floor 1.8 m above FFL. Note the isolator must be capable of being locked in the off position. Provide a cableway from the isolator to the lift shaft with draw wire.
6. Provide a socket outlet near to the lift for service purposes.
7. Provide a cableway with draw wire for the lift service panel at the upper level and the call stations at each level in to the lift shaft area.
8. Provide a clear access route for the equipment during installation.
9. Provide protection to the building finishes during egress of the materials.
10. Disposal of packaging material.
11. Provide 110v task lighting in the installation area if required.
12. Provide barriers if required at each floor to guard against fall hazards.
13. Provide a BT telephone line point at the top floor for the platform emergency telephone. Provide a cableway with draw wire from the telephone point to the lift shaft area.
14. Make good the lift enclosure to the building fabric as required.
15. Provide FFL datum at each door opening.
16. Provide structural openings at each level served full width of the shaft 2300 mm high to allow for door frame installation. Allow 2380 at the upper floor for the installation of the shaft ceiling.
17. Provide assistance in off loading and distribution of equipment.
18. Dust seal the rear wall and paint black. Note the wall is visible through the landing doors and from the platform.
19. Provide working platform with access 1000 below each mast fixing point. Leave space the full width of the shaft by 250 deep to allow installation of the mast.



Issued For Information Only
Do Not Use for Construction

BY	DATE	ISSUE	MODIFICATION	CHECKED

Niche Home 880 x 805 Platform Lift Layout & Builders Works

NICHE LIFTS Ltd
Do not scale this drawing. All dimensions in millimetres

DRAWN BY	DATE	CHECKED	SCALE
TMP	28.11.18		NTS
DRAWING NUMBER			
2094/A Sheet 2 of 2			