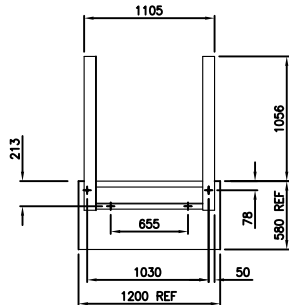
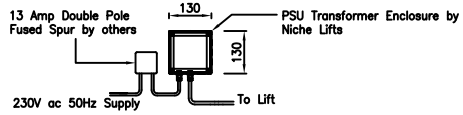
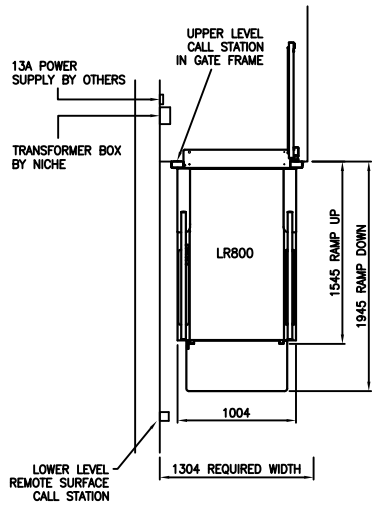


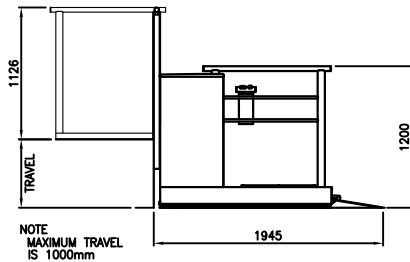
Lift Power Supply & Transformer Box



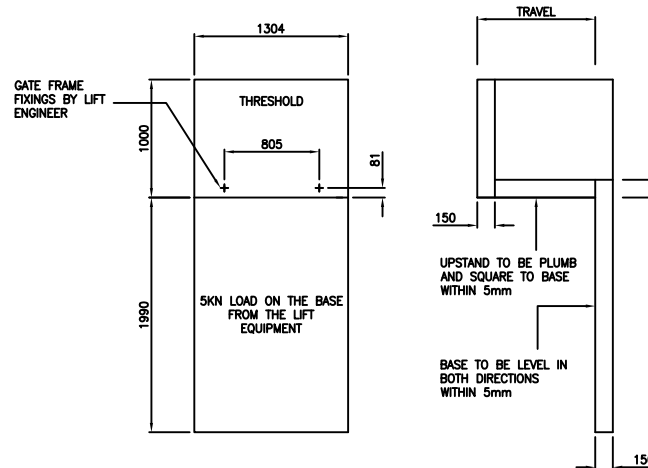
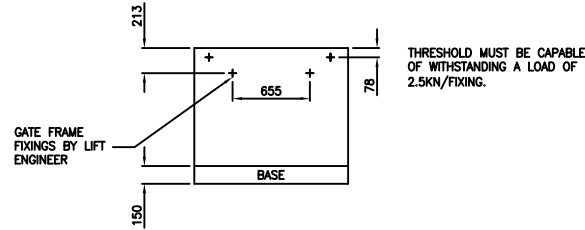
HOLES DRILLED BY INSTALLATION ENGINEERS
GATE FRAME FIXINGS



PART PLAN VIEW



VIEW ON SIDE OF LIFT



BASE, UPSTAND AND THRESHOLD DETAIL BY OTHERS

BASIC LIFT DATA

- Model: LR800 (Steplift)
- Rated Load (SWL): 300kg
- Lift Travel: 1000 Max
- Lift Speed: 20mm/sec
- Ramp Gradient: 1:6
- Lift Colour: Bleu Sable

COMPLIANCE

- Lift Complies to the EHSR of Directive 2006/42/EC
- Lift complies to BS 6440:2011

CLIENT TO PROVIDE

1. 230V 50Hz Single Phase Supply
2. Adequate Lighting for landing entrances.

NOTES

It is recommended that the lift unit (where practicable) be positioned central to steps and or door opening.

1500mm Access recommended at upper and lower levels to allow for wheelchair turning circles.

A Minimum of 2000mm is required above the threshold floor level.

Lift Clearances Recommended by BS6440: 2011

The minimum clearance to adjacent surfaces is 100 where the adjacent surface is smooth and continuous up to the lift handrail height when the lift is at the upper level.

Note: There is a risk of crushing if the part of the structure is less than 100mm to an adjacent surface.

Adjacent surfaces greater than 100mm and less than 300mm shall be smooth and continuous up to the height of the lift handrail when the lift is in the upper position.

Side panel full infills are available, these can overcome certain hazards. Eg. Dwarf walls at the ground floor, which are below 1200mm high

Each site presents different risks, these must be assessed and addressed accordingly.

ELECTRICAL DATA

PSU Box (130 x 130 x 100)
Lighting Electrical Supply to be independent of Lift power supply

BUILDERS NOTES

Base construction to be of concrete construction to support loadings.

BY	DATE	ISSUE	MODIFICATION	CHECKED
TMP	30.11.18	2	Redrawn	

NICHE LOW RISE 800 WIDE PLATFORM LIFT LAYOUT & BUILDERS WORK

NICHE LIFTS Ltd		DRAWN BY	DATE	CHECKED	SCALE
Do not scale this drawing. All dimensions in millimetres		TMP	30.10.09		NTS
		DRAWING NUMBER			
		1299/2			