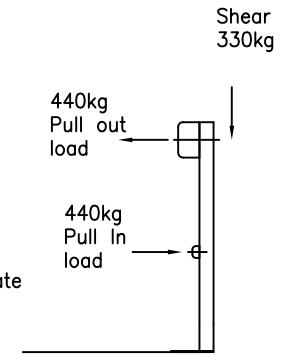


Specification

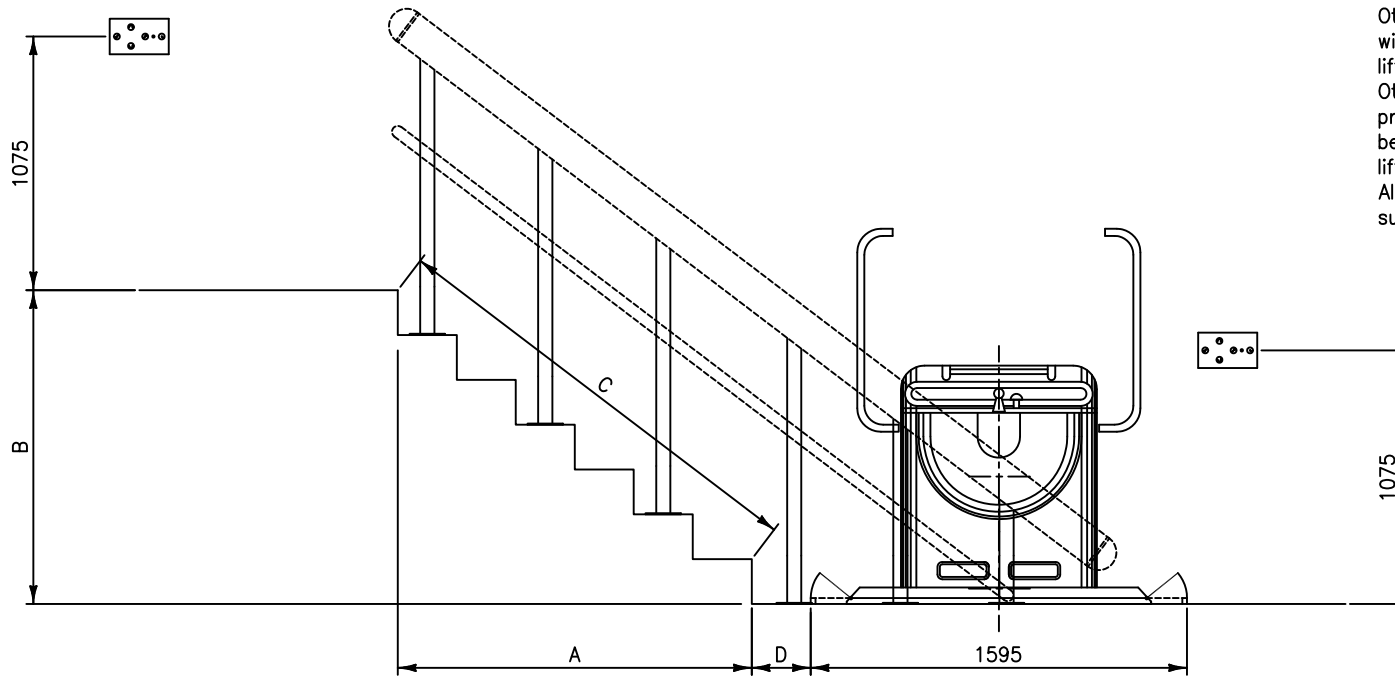
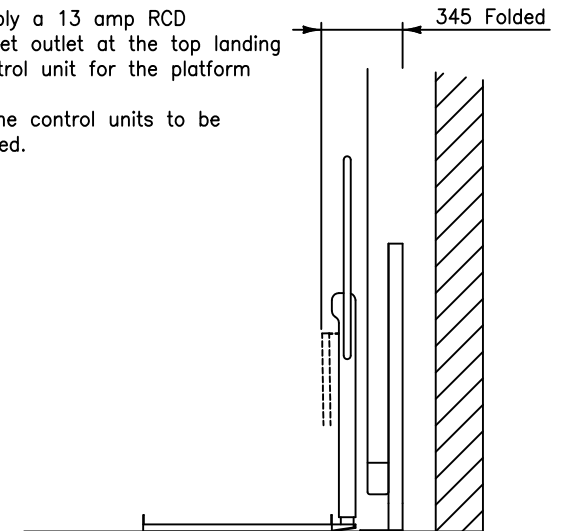
1000 x 800 mm Platform  
 Front Access  
 Rated load 225 kg  
 Speed 0.1 m/s  
 Supply: Single phase 220 VAC  
 Carriage Colour: RAL 7035  
 Rail finish anodized aluminum  
 Wall Mounted  
 20-50 degree stair angle  
 Electrical components rated to IP65  
 Control units at both landings incorporate  
 Up/Down, barrier and platform position  
 constant pressure controls.



Notes

FIXING RAIL REACTIONS

Others to ensure that the fixing wall can withstand the loads from the platform lift.  
 Others to supply a 13 amp RCD protected socket outlet at the top landing below our control unit for the platform lift supply.  
 All wiring to the control units to be surface mounted.



Issued for information only  
 Do Not Use for Construction

BY	DATE	ISSUE	MODIFICATION	CHECKED
TMP	30.11.18	B	Redrawn	

INCLINED PLATFORM LIFT 1250 X 800 PLATFORM GENERAL ARRANGEMENT STANCHION MOUNTED RIGHT HAND

<b>NICHE LIFTS Ltd</b>		DRAWN BY	DATE	CHECKED	SCALE
Do not scale this drawing. All dimensions in millimetres		TMP	3.5.07		1:25
		DRAWING NUMBER			
		1181/B			