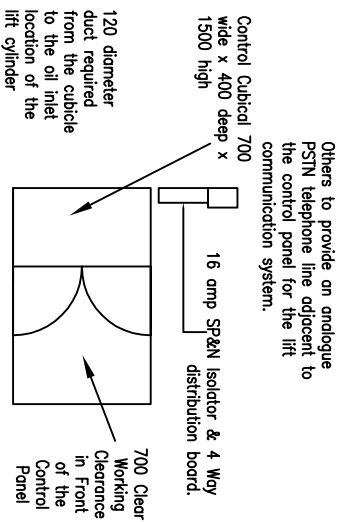
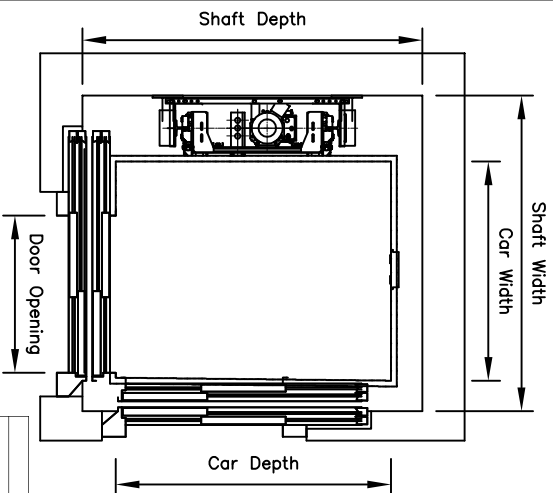

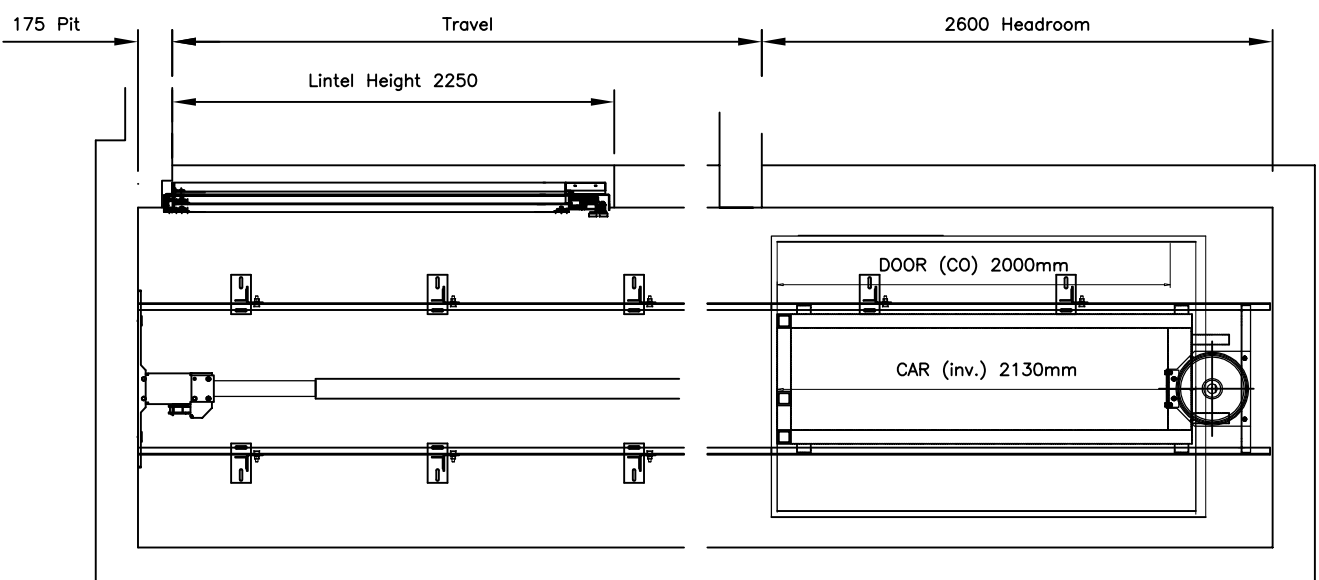


LOADS TABLE			
RATED LOAD	365 dan		F1 = 1500 dan
FRAME WEIGHT	120 dan		F2 = 1850 dan
CAR WEIGHT	320 dan		P = 4200 dan
OPERATOR WEIGHT	70 dan		T = 925 dan
ROPE WEIGHT	20 dan		
SUSPENDED LOAD	925 dan		Sx = 125 dan Sy = 534 dan



AUTOMATIC Car Fit Landing Doors - Adjacent Arrangement									
Accessibility	Capacity	Persons	Car	Car Depth	Shaft Width	Shaft Depth			
			Width		1400	1500			
							800	1400	1300
	250kg	3	1000	1400	1500	700			
			1000	1500	1570	750			
	300kg	4	1200	1400	1500	700			
			1250	1480	1550	750			
			1300	1600	1600	750			
			1650	1650	750				
	350kg	4	1200	1560	1650	800			
			1400	1750	1750	800			
	400kg	5	1000	1650	1650	800			
			1300	1700	1800				
450kg	5	1000	1650	1650	900				
		1400	1700	1800					



Rated Load	See Table
Rated Speed	0.15 m/s
Travel	upto 9.0m
Headroom	2500
Pit	150
Supply	230v, SP&N with 20amp MCB Type I
Running Current	16 amps
Starting Current	28 amps
Starts/Hour	20

- ## Builders Works Notes

1. Form lift shaft to dimensions shown Shaft walls to withstand the reactions as shown
2. Form the pit as shown to withstand the forces as shown.
3. Leave the front wall down floor to ceiling at the bottom floor.
4. Do not build nib walls until the lift entrances have been inscribed.
5. Provide a smoke vent at the top of the shaft to outside atmosphere.
6. Provide a SP&N supply terminated in a lockable isolator protected by a 20 amp Motor Rated MCB. To be located adjacent to our control panel.
7. Provide a 2-off fused spurs adjacent the the isolator.
8. Provide space for our control/power pack cubicle which is 700 wide x 400 deep x 1500 high. To be located within 5metres from the bottom of our hydraulic cylinder. Location to be agreed.
9. Provide a 120 diameter duct from the control panel position to the lift shaft on the cylinder side.
10. Install shaft scaffolding.
11. Fit lintels at each floor as shown.
12. Make good to our door frames following installation.
13. Provide assistance in offloading and distribution of our materials.
14. Provide a BT dedicated analogue line for the lift car communication system.

BY	DATE	ISSUE	MODIFICATION	CHECKED	<p>NICHE LIFTS Ltd</p> <p>Do not scale this drawing. All dimensions in millimetres</p> <p>NICHE LIFTS LTD Suite 3, 27 London Road, Bromley, Kent. BR1 1DG Tel: 020 8296 2662 Fax: 020 8466 1685 e-mail: contract@nichelifts.co.uk Web Site: www.nichelifts.co.uk</p>
<p>Niche Passenger Lift Adjacent with Ram to Side in a Masonry Shaft with Reduced Headroom & Pit General Layout and Builders Works</p>					
<p>DRAWING NUMBER</p> <p>1638/A</p>					<p>DRAWN BY</p> <p>DATE</p> <p>CHECKED</p> <p>SCALE</p>
					<p>TMP</p> <p>3.7.13</p> <p>MS</p>