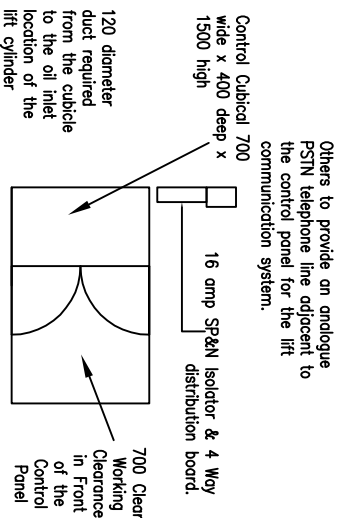
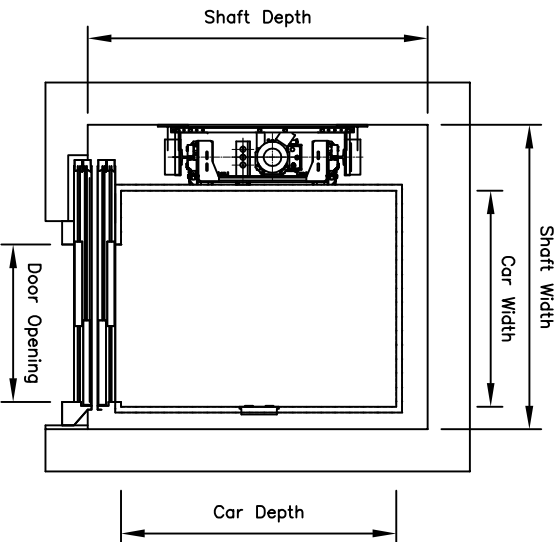
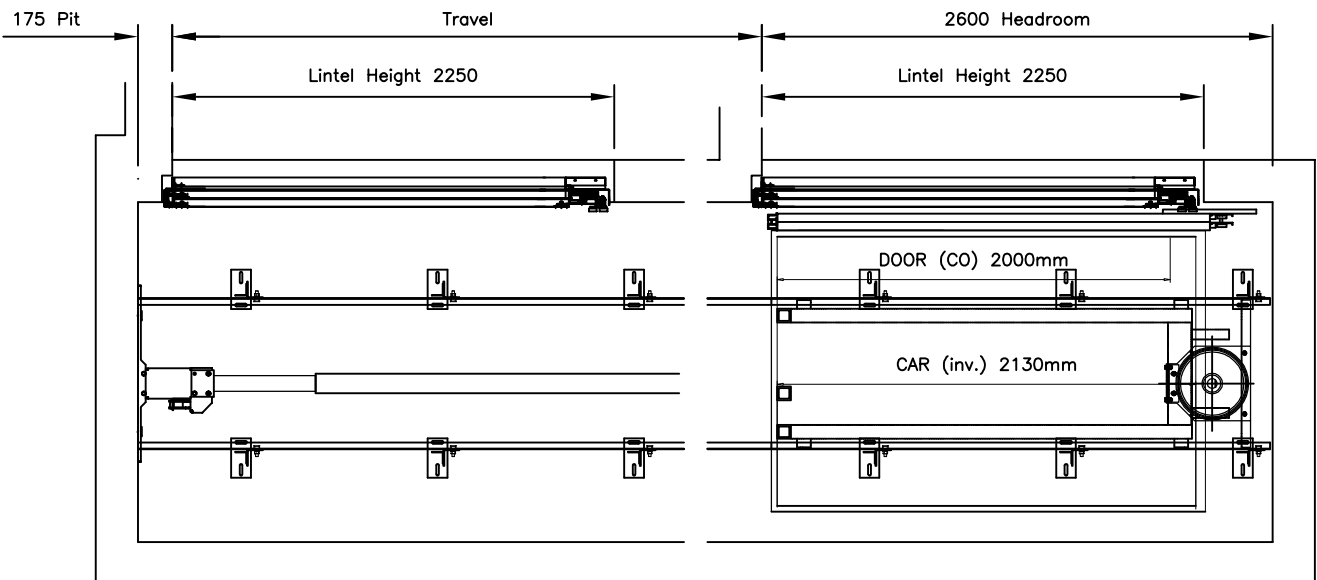


LOADS TABLE			
RATED LOAD	395 dan	F1 = 1500 dan	
FRAME WEIGHT	120 dan	F2 = 1850 dan	
CAR WEIGHT	320 dan	P = 4200 dan	
OPERATOR WEIGHT	70 dan	T = 925 dan	
ROPE WEIGHT	20 dan		
SUSPENDED LOAD	925 dan	Sx = 125 dan	Sy = 534 dan



Pump/Control Panel
Details Location TBA

Automatic Car & Landing Doors Front Single Car Entrance, Ram to the side					
Capacity	Persons	Car Width	Car Depth	Shaft Width	Shaft Depth
250kg	3	800	1000	1210	1330
		850		1260	1330
				1330	1330
300kg	4	800	1000	1260	1330
				1330	1330
				1330	1330
				1330	1330
350kg	4	900	1200	1400	1730
				1400	1730
400kg	5	1000	1200	1550	1530



Rated Load	See Table
Rated Speed	0.15 m/s
Travel	upto 9.0m
Headroom	2500
Pit	150
Supply	230V, SP&N with 20amp MCB Type D
Running Current	16 amps
Starting Current	28 amps
Starts/Hour	20

Builders Works Notes

1. Form lift shaft to dimensions shown Shaft walls to withstand the reactions as shown
2. Form the pit as shown to withstand the forces as shown.
3. Leave the front wall down floor to ceiling at the bottom floor.
4. Do not build nib walls until the lift entrances have been installed.
5. Provide a smoke vent at the top of the shaft to outside atmosphere.
6. Provide a SP&N supply terminated in a lockable isolator protected by a 20 amp Motor Rated MCB. To be located adjacent to our control panel.
7. Provide a 2-off fused spurs adjacent the the isolator.
8. Provide space for our control/power pack cubicle which is 700 wide x 400 deep x 1500 high. To be located within Smetres from the bottom of our hydraulic cylinder. Location to be agreed.
9. Provide a 120 diameter duct from the control panel position to the lift shaft on the cylinder side.
10. Install shaft scaffolding.
11. Fit lintels at each floor as shown.
12. Make good to our door frames following installation.
13. Provide assistance in offloading and distribution of our materials.
14. Provide a BT dedicated analogue line for the lift car communication system.

Issued For Information Only

BY	DATE	ISSUE	MODIFICATION	CHECKED
TMP	4.6.13	B	Entrances now on the landing	
Niche Passenger Lift Front Opening with Ram to Side in a Masonry Shaft with Reduced Headroom & Pit General Layout and Builders Works				
NICHE LIFTS LTD Suite 3, 27 London Road, Bromley, Kent, BR1 1DC Tel: 020 8296 2862 Fax: 020 8466 1695 e-mail: contracts@nichelifts.co.uk Web Site: www.nichelifts.co.uk				
Do not scale this drawing. All dimensions in millimetres				
NICHE LIFTS Ltd			DRAWN BY	DATE
			TMP	18.5.12
			CHECKED	SCALE
				1:30
			DRAWING NUMBER	
			1497/B	