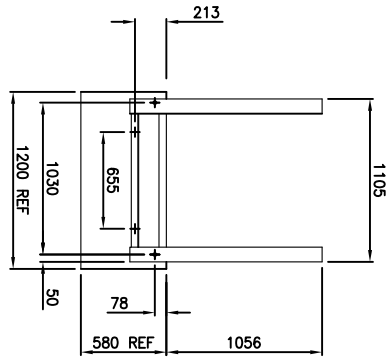


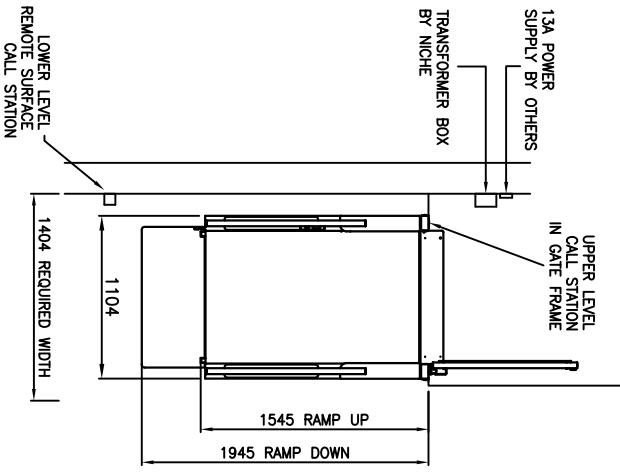
Technical Information

Built in Compliance with BS 6440:1999
 Safe working load = 300Kg
 Maximum threshold height = 1000mm
 Lift speed = 20mm/sec
 Ramp gradient = 1:6
 Power supply = 230V ac 50Hz single phase & earth
 Power Consumption = 240 Watts
 Lift operating voltage = 24V dc
 Battery backed raise and lowering
 Manual emergency lowering
 Hydraulic drive
 Total lift unladen weight = 200Kg
 Suitable for internal and external use

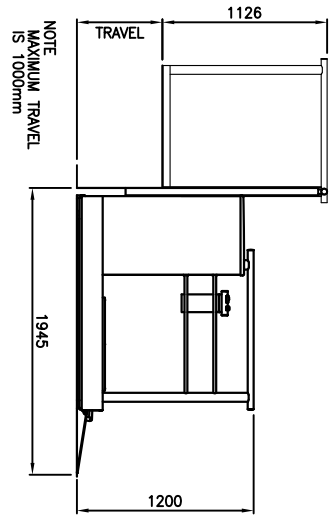
Notes
 1500mm of clear space is recommended of the entrance and exit points of the lift for access.
 A minimum of 2000mm is required above the threshold height.



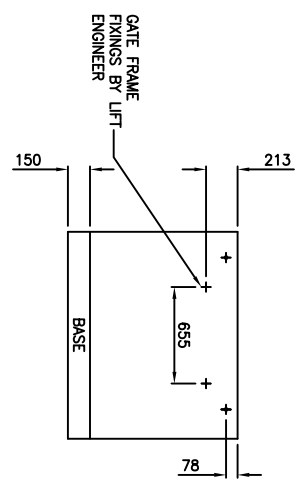
HOLES DRILLED
 BY INSTALLATION ENGINEERS
GATE FRAME FIXINGS



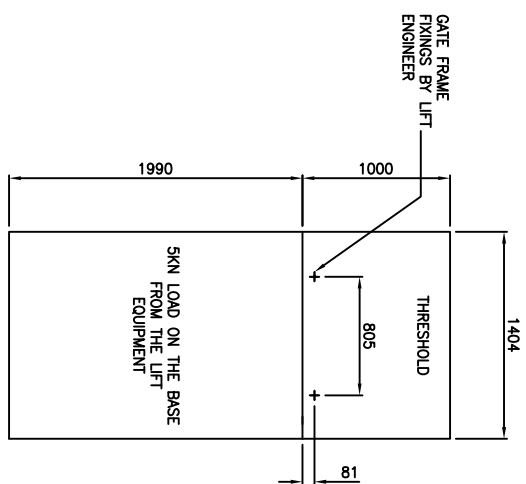
PART PLAN VIEW



VIEW ON SIDE OF LIFT

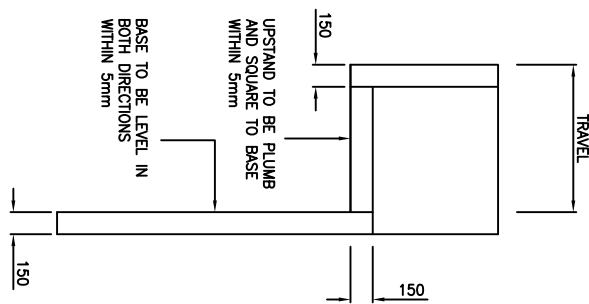


GATE FRAME FIXINGS BY LIFT ENGINEER



GATE FRAME FIXINGS BY LIFT ENGINEER

THRESHOLD MUST BE CAPABLE OF WITHSTANDING A LOAD OF 2 SKN/FIXING.



BASE, UPSTAND AND THRESHOLD DETAIL BY OTHERS

BY	DATE	ISSUE	MODIFICATION	CHECKED

NICHE LOW RISE 900 WIDE PLATFORM LIFT LAYOUT & BUILDERS WORK

NICHE LIFTS LTD 82 St Georges Road West, Bromley, Kent, BR1 2NP Tel: 020 8295 2892 Fax: 020 8467 1044
 e-mail: sales@nicelifts.co.uk Web Site: www.nichelifts.co.uk

NICHE LIFTS Ltd		DRAWN BY	DATE	CHECKED	SCALE
Do not scale this drawing. All dimensions in millimetres		TMP	30.10.09	NIS	
DRAWING NUMBER		1300/1			