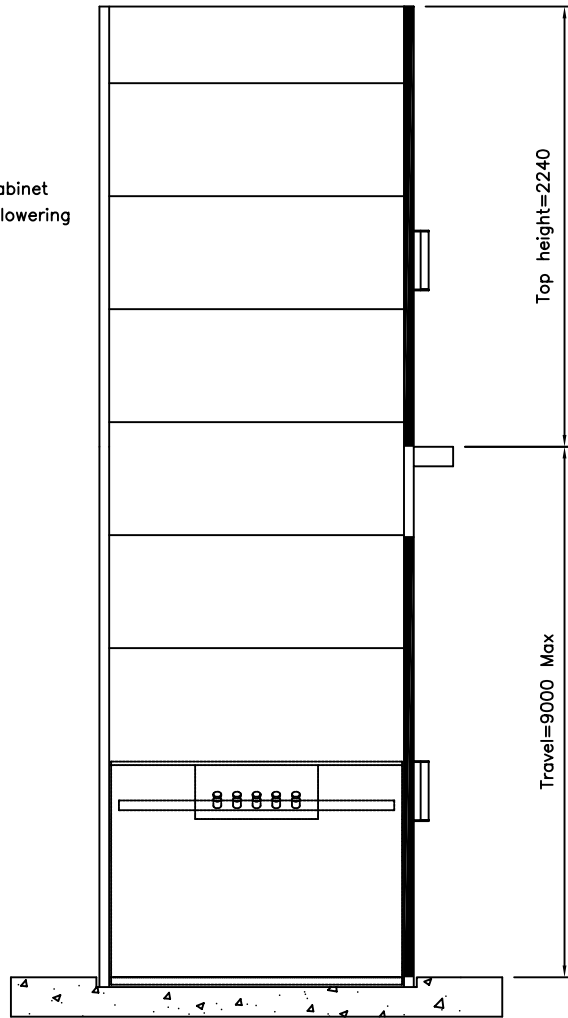
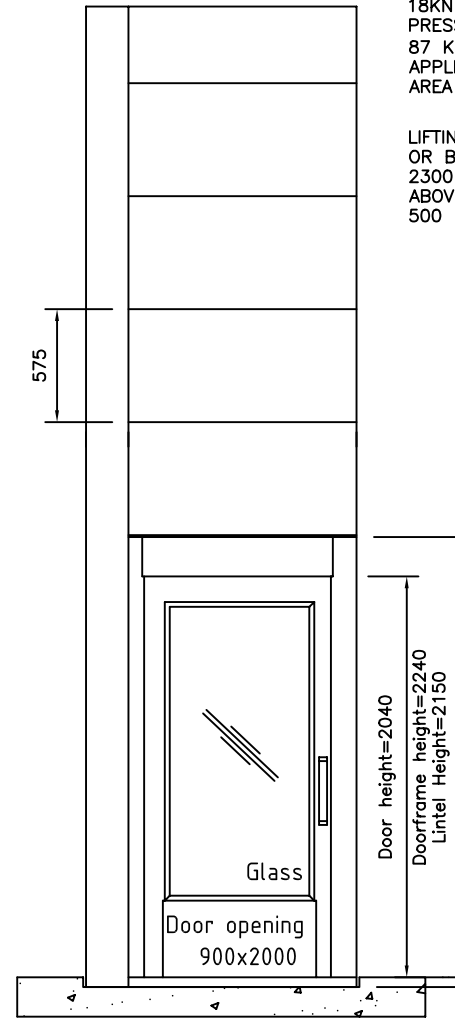


View A



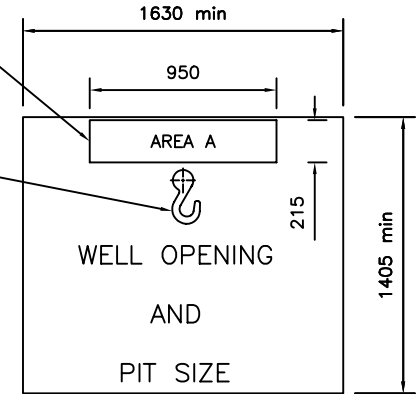
View B



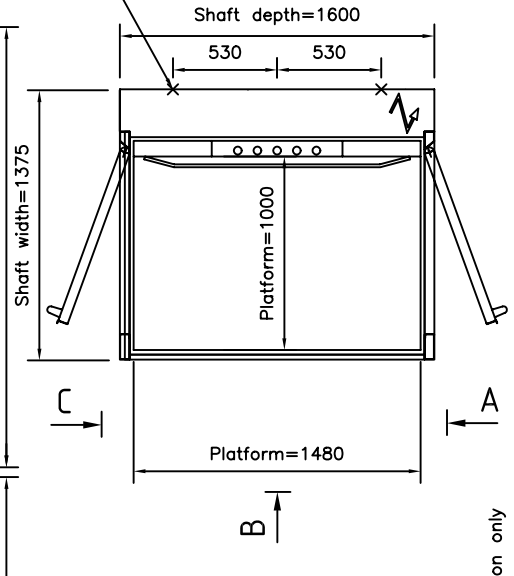
View C

LOAD ON PIT FLOOR IS 18KN PRESSURE IS 87 KN/m<sup>2</sup> APPLIED TO AREA A

LIFTING HOOK OR BEAM 2300 MM ABOVE FFL 500 KG SWL



FIXING OF SUPPORT FRAME TO THE WALL AT EACH FLOOR LEVEL REACTION=2.5KN



Type	Disabled Access Platform Lift	Supply	400v 3 Phase 50 Hz
Drive	Screw Drive	Running Current	4.7 amps
Rated Load	400 Kg	Starting Current	18 amps
Travel	Maximum of 9.0 metres	Enclosure	Steel Panels RAL 9003
No. of Stops	Maximum of 5 Stops	Door Type	GL Manual
Configuration	Through Arrangement	Door Fire Rating	None

WORKS BY OTHERS & STRUCTURAL LOADINGS

SEE DRAWING NO. 1122 FOR A GENERAL LIST OF WORKS BY OTHERS.

Issued for information only

BY	DATE	ISSUE	MODIFICATION	CHECKED
TMP	21.8.05	B	Pit loadings Amended	
TMP	31.10.06	C	Re drawn	

PLATFORM LIFT STANDARD LAYOUT  
THROUGH ARRANGEMENT WITH 1000mm PLATFORM STEEL ENCLOSURE

NICHE LIFTS Ltd

Do not scale this drawing. All dimensions in millimetres

DRAWN BY	DATE	CHECKED	SCALE
TMP	31.10.06	FWP	NTS

DRAWING NUMBER

1043/C